



Global Reach. Local Benefits.

Linda Sternheimer
Director, Urban Planning and Engagement

DECEMBER 9, 2015

Quick Facts about Port of Cleveland

Created in 1968 by ORC 4582 to provide efficient and business-like management of waterfront cargo docks

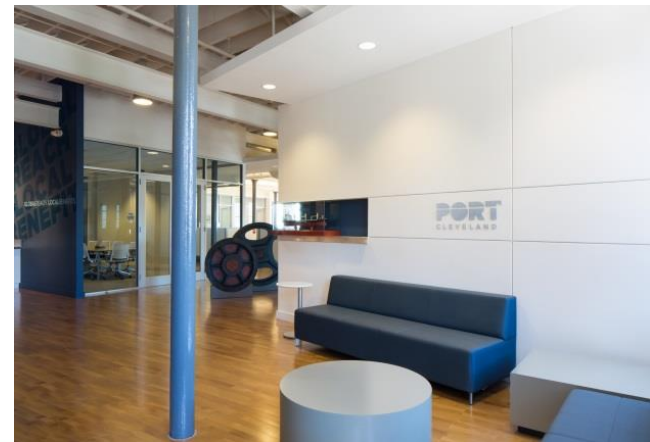
9 Board Members

- 6 by Mayor of City of Cleveland
- 3 by County Executive

Port owns/leases approximately 145 waterfront acres

- Landlord model
 - Private sectors handles cargo; Port is asset manager

- Budget
 - Operating = \$20,000,000
 - \$14M Maritime
 - \$3M Finance
 - \$3M Taxes
- Location
 - Downtown Cleveland



Port of Cleveland Overview



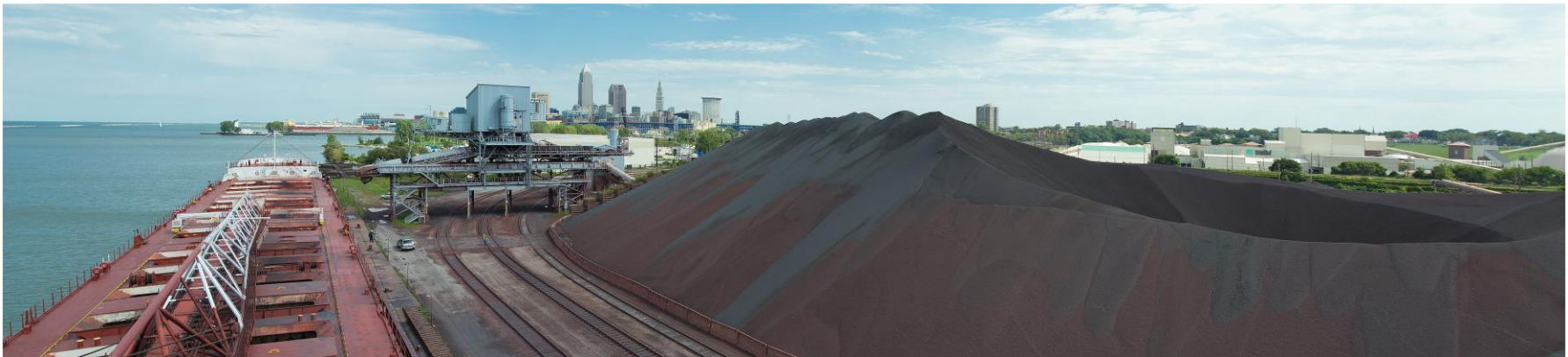
- Eastern-most, major U.S. port of call on the Great Lakes/St. Lawrence Seaway System
- A “destination” port connecting NE Ohio to the global economy
 - 90% of cargo produced or consumed within a 75-mile radius
 - Half of American marketplace within eight-hour drive

Port of Cleveland Overview

Cleveland Harbor includes public & private terminals along Lake Erie shoreline & 6.5 mile navigation channel of the Cuyahoga River

Lake and river terminals regularly handle:

- Finished and semi-finished steel
- Iron ore, stone, sand, cement, liquid bulks
- Oversized “project” cargo including wind energy components



Cleveland's Port in Context



Cleveland's Port in Context



Stepped Up Mission

- **Dual mission of operating a well run Maritime Port and solving infrastructure challenges in the following key areas:**
 1. **At the Port**
 2. **In the Harbor**
 3. **Around the community**

At the Port: Green Marine

Green Marine is a voluntary environmental certification program for the North American marine industry. It is a rigorous, transparent and inclusive initiative that addresses key environmental issues through its 11 performance indicators.

- **The Port of Cleveland is a founding member and has taken a leadership role in the organization**

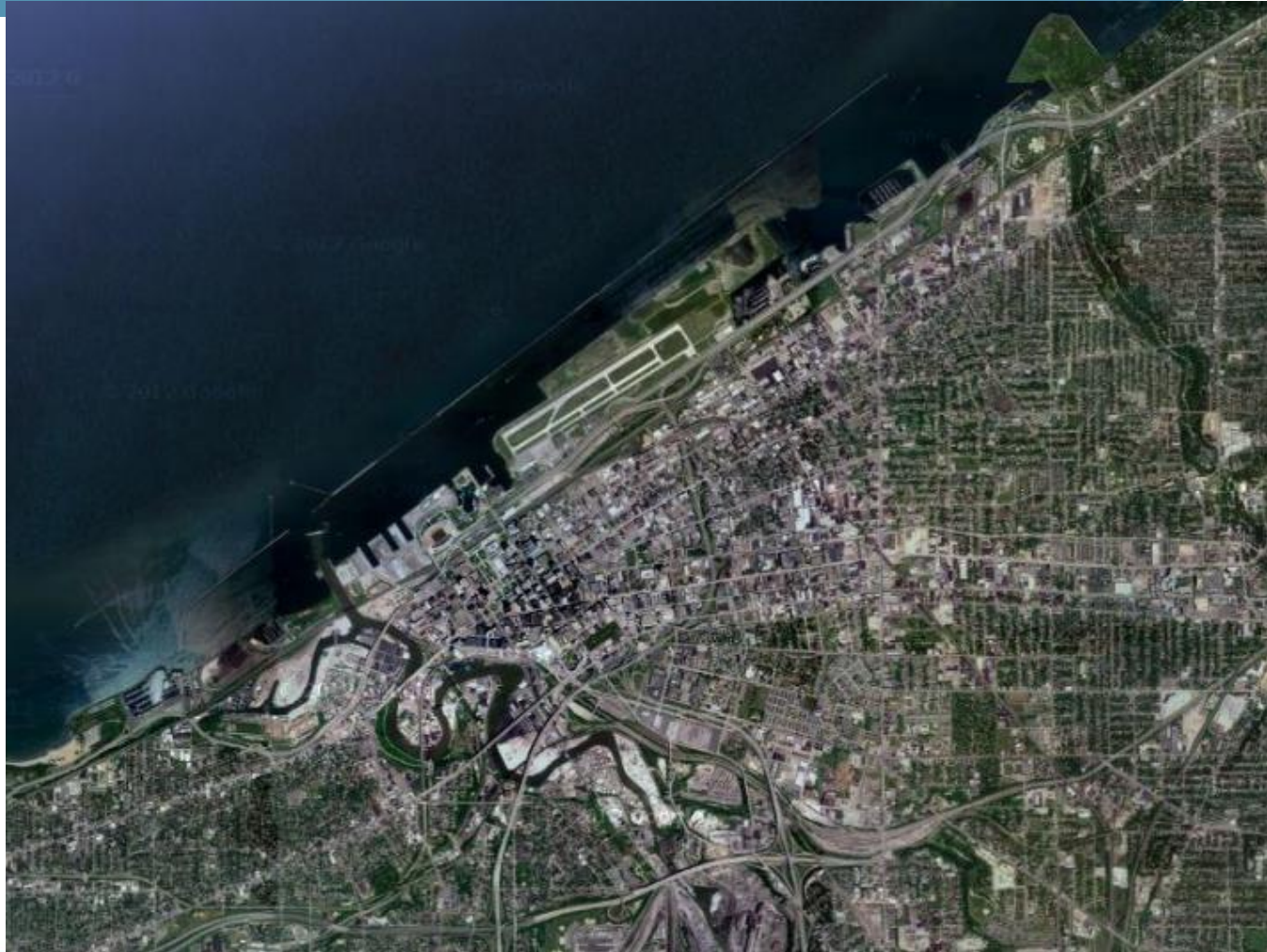


Cleveland Harbor

**6 miles of
breakwater**

**5.9 mile Ship
Channel on the
Cuyahoga River
+ 1 mile on the
Old River
Channel**

**Depths of 28 feet
in outer harbor
and 23 feet in the
River**



III. Floating Debris Management



Flotsam & Jetsam

Port designed and custom built debris harvesters
\$ 460,000 EPA grant to Port

Since fall 2012:

500 TONS of small floating debris has been harvested:

Plastic Bottles

Coffee Cups

Branches and weeds

2 plastic grocery bags

55 -30 yard dumpsters of large logs

Oct 2015



Typical post storm debris at CSO outfall

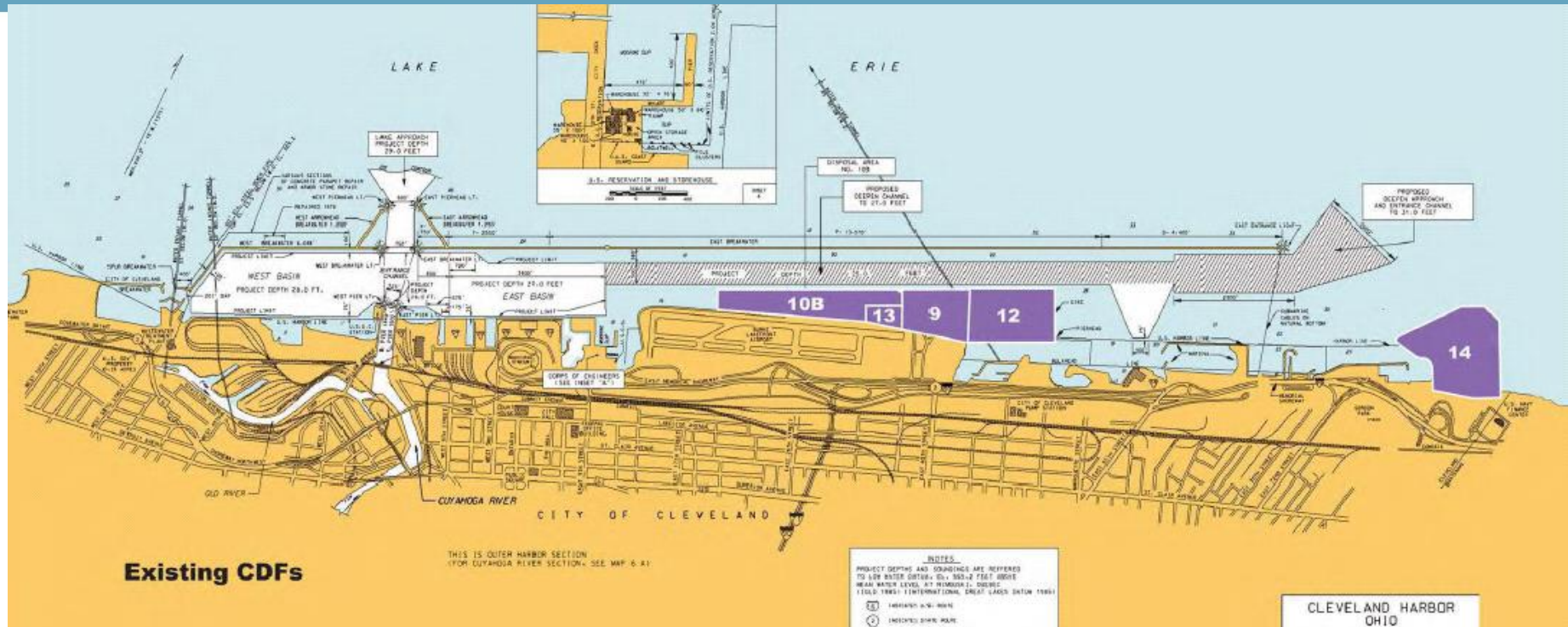


Habitat Installations



Floating Boom repairs at Scranton Habitat Oct 15





Environmental Stewardship

A Green Port on a Great Lake

- 88-acre man-made peninsula, formerly known as Dike 14
- Created over time as sediment dredged from the Cuyahoga River and Cleveland Harbor was placed within dike walls from 1979-1999



Important Birding Area



Focus on Maximizing Community Benefit



Over the years, this area has become naturalized with diverse habitats including forest, grasslands, meadows, and wetlands. It is now home to a diverse array of birds, including 23 of Ohio's 29 Endangered Species, and butterflies and mammals. This significant site provides a unique opportunity for public access to Lake Erie and is a natural oasis right in the heart of Cleveland. Cleveland's Dike 14 has earned the title Cleveland Lakefront Nature Preserve.



Environmental Stewardship

A Green Port on a Great Lake

Promoting environmental initiatives and public access to the lakefront

- Opened to the public daylight hours for passive recreation in February 2012
- Previously sediment disposal site that nature transformed into 88-acre wildlife haven
- To Date More than 73,000 visits from 41 states and 15 countries
- Opportunity for eco-tourism
- 1.2 miles of shoreline & 2.5 miles of trails
- AAPA 2012 Environmental Improvement Award



5 Acre Remediation

**US EPA Brownfield Grant
Partnerships**

County

Ohio EPA

Soil and Water

Conservation District

**Capped site with 40,000
cubic yards**

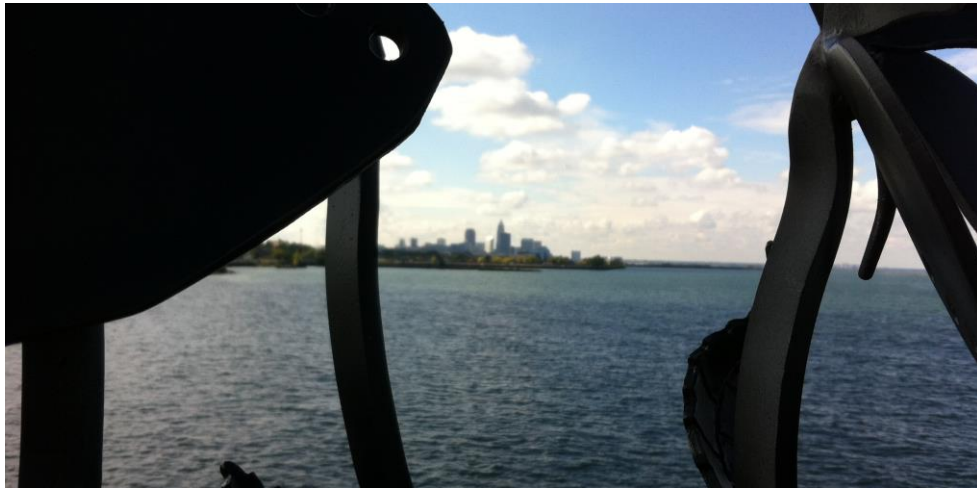
DIKE 14- CLEVELAND LAKEFRONT NATURE PRESERVE



Butterflies



Overlook



In river unit being installed April 1.



July 2015 1400 CYs



Bed load harvest is Sustainable

Bed load interception is significantly less costly than dredging and placement in CDFs

Dredging @ \approx \$ 7.00 cost per cubic yard

CDF placement @ \approx \$11.50 cost per cubic yard

tll \$ 18.50 per cubic yard

VS Bed load harvested for use is projected @

\$2.00 Net Income per cubic yard

Pumping, dewatering, maintenance, stacking, loading, admin.

Out of the river and on the truck to the market- **self funding.**

Saves USACE \$650,000 per year in dredging costs

Port received \$1.2 Million in State Capital Funds for full scale, multi-year pilot project

Environmental Stewardship

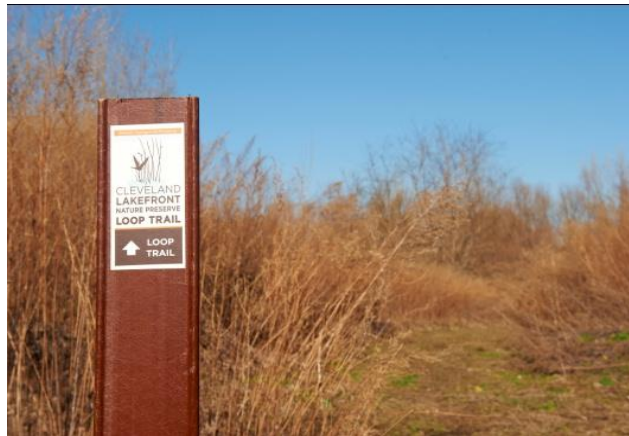
A Green Port on a Great Lake

We're dedicated to improving the quality of life in our region by safeguarding two of our great natural assets:

Cuyahoga River and Cleveland's Lake Erie shoreline



- Keeping the river and lakefront open for navigation free of floating debris
- 88-acre Port of Cleveland Lakefront Nature Preserve
- Maritime transportation offers a lower carbon footprint, greater fuel efficiency, and reduces roadway congestion and its resulting pollution



We're partners in community development - creating public spaces, protecting our waterways, and helping to reinvigorate our region.

